

TRACKED EXCAVATORS | 205 NXT

 **JCB**

LIVE  LINK



 **JCB** **NXT**

TOUGH | EFFICIENT | CONNECTED

OPERATING WEIGHT
21,780 kg

ENGINE POWER
104 kW (140hp)

BUCKET SIZE
1.02m²

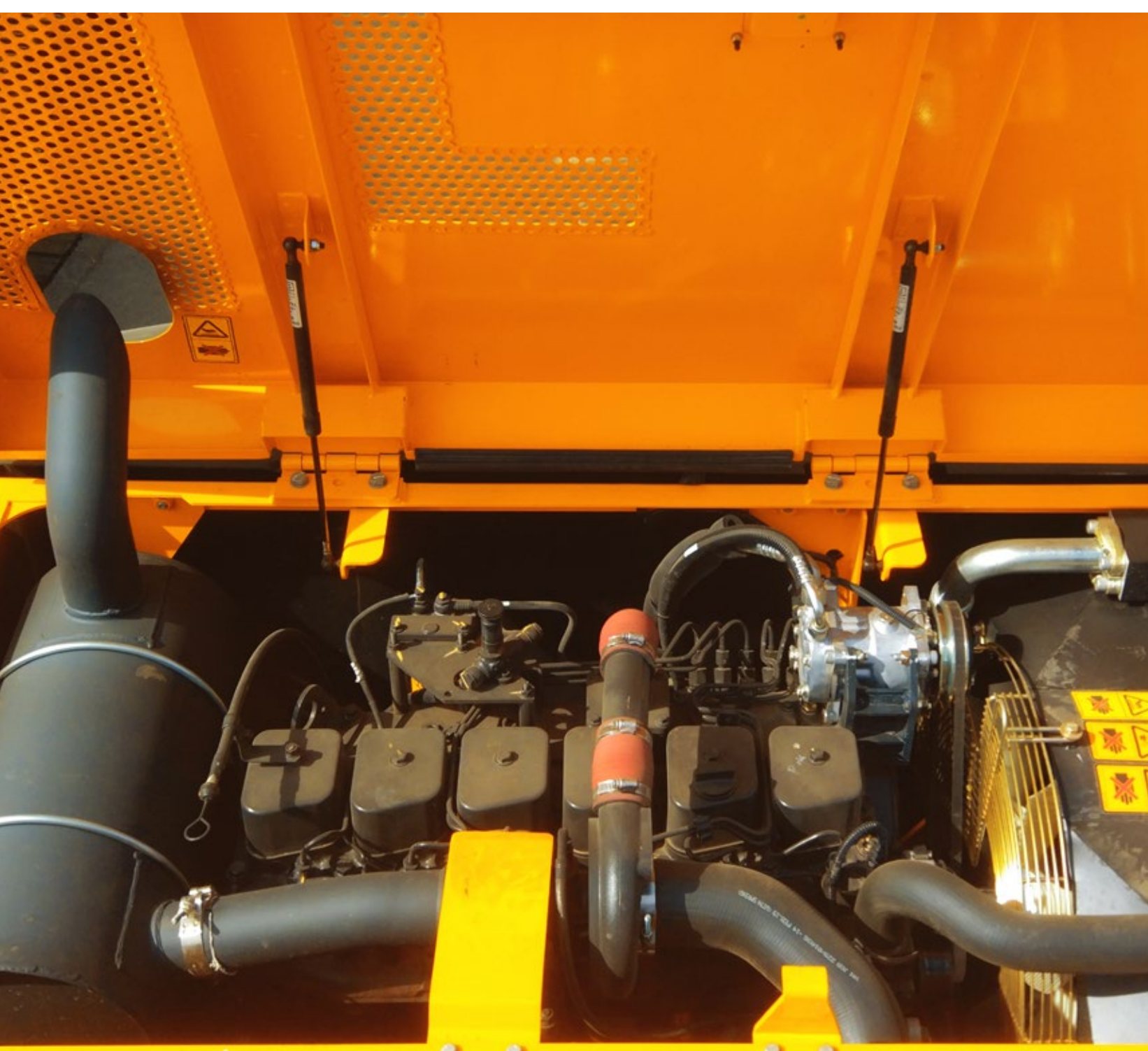
NXT LEVEL OF TOUGH

Heavy duty as standard with reinforced arms, undercarriage idler ends and upper frame. The heaviest duty undercarriage in the 20t excavator class.



STRENGTH & PROTECTION

Idler and belly damage protection plates, fitted as standard. The JCB X-frame is fully robot welded using 25% more steel.



ENGINE

The 205 NXT is powered by a CUMMINS 6 Cylinder, in-line direct injection, mechanical Engine. Designed for the toughest environment, making maintenance and reliability second to none.

NXT LEVEL OF TOUGH

JCB 205 NXT boasts the best components in the industry: Kawasaki pumps and Kayaba main control valve. JCB hydraulic filtration system provides class leading component protection and double the oil life, with up to 5,000 hours between hydraulic oil changes.



SERVICE INTERVALS

Hydraulic main filter

Every **1,000** hours

Hydraulic oil

Every **5,000** hours



BUCKET

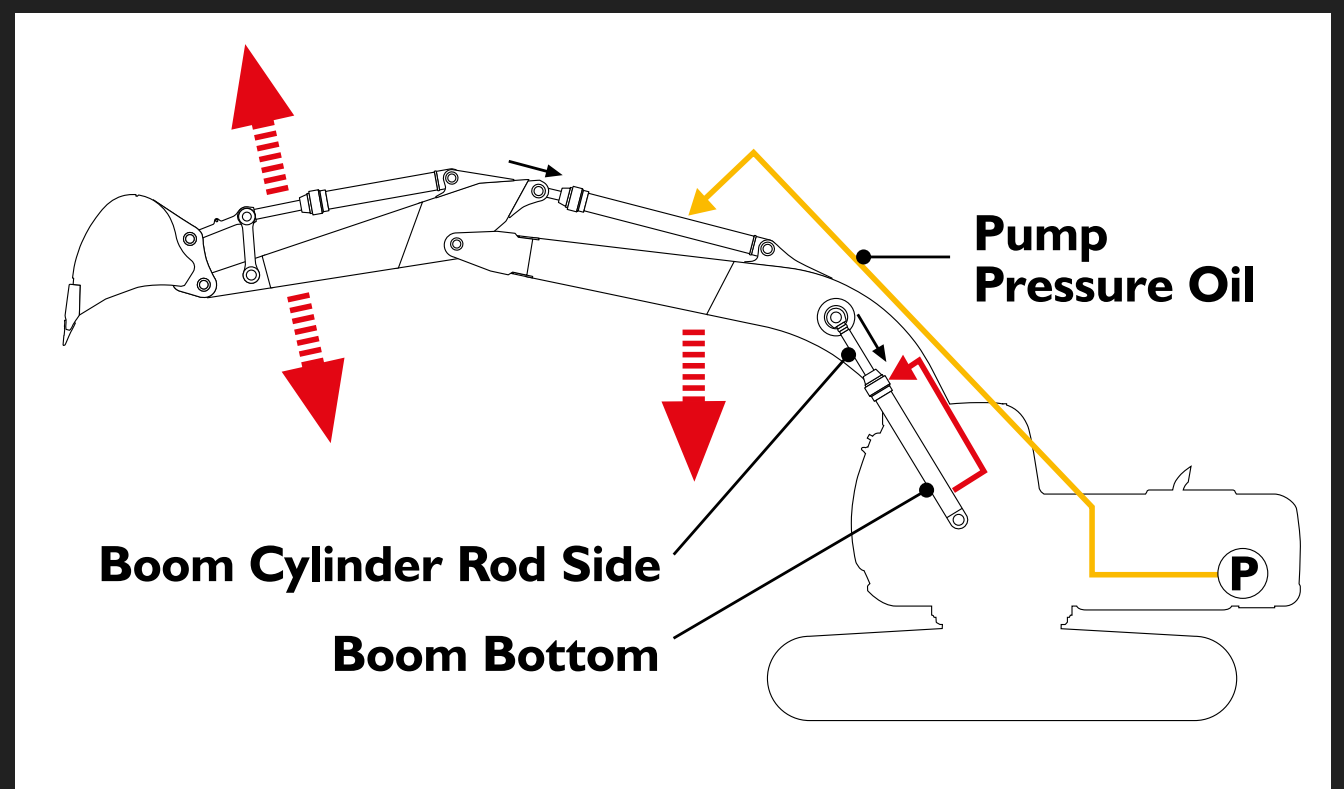
A bucket tearout of 130kN means the 205 NXT can really get the job done quickly, even in hard ground conditions.



NXT LEVEL OF EFFICIENCY

ECOHYDRAULICS

JCB ecoHYDRAULICS regenerates the excavator hydraulic energy, saving fuel and allowing higher operating speeds with less demand on pumps. Saving fuel and time.



CAB

Comfortable and ergonomic cab with suspension seat and air conditioning. Excellent visibility to side, rear and top, and viscous cab mounts minimize vibrations.



INTELLICONTROL

IntelliControl displays real-time data, including fuel status, health alerts, engine speed and operating mode status.

NXT LEVEL OF EFFICIENCY

High swing speed of 12 rpm shortens the digging cycle time, thus increasing overall productivity.



FUEL EFFICIENCY

Auto Idler function improves fuel efficiency by automatically reducing the engine speed when the machine is not at work for a set period of time which can be customized.



NXT LEVEL TO STAY CONNECTED

JCB's worldwide customer support is first class. Whatever you need and wherever you are, we'll be available quickly and efficiently to help make sure your machinery is performing to its full potential.



JCB SERVICE

The global network of JCB Parts Centres is another model of efficiency; with 16 regional bases, we can deliver around 95% of all parts anywhere in the world within 24 hours. Our genuine JCB parts are designed to work in perfect harmony with your machine for optimum performance and productivity.

BACK UP

Our Technical Support Service provides instant access to factory expertise, day or night, while our Finance and Insurance teams are always on hand to provide fast, flexible, competitive quotes.



NXT LEVEL TO STAY CONNECTED

The JCB 205 NXT comes with a 5 years LiveLink contract and advanced telematics system. JCB LiveLink keeps you updated about machine health, maintenance and security.

LIVE LINK

FITTED AS STANDARD



FLEET MANAGEMENT

With JCB LiveLink, managing your machines becomes even easier. Its ability to provide real-time information keeps you in complete control and lets you monitor and manage your machines remotely via a PC or Smartphone.

ALERTS

Livelink's real-time geofencing alerts tell you when machines move out of predetermined zones, and real-time curfew alerts inform you of unauthorised usage. It also notifies major health alerts and when major services are due.



TRACKED EXCAVATORS | 205 NXT



SPECIFICATION

MODEL	205 NXT LC A/C
Engine	104 kW (140 hp)
Operating weight	21,780 kg
Hydraulic pumps	2 x 220 l/min
Travel speed	3.4 / 5.9 kph
Swing speed	12 rpm
Max. digging reach	9.79 m
Max. bucket tearout	130 kN





Ben-Azel Ponio

President - BSP & Company Inc.

“We like the machine, the production and cost-effectiveness is very good for us.”

BEN-AZEL PONIO | BSP & COMPANY INC

TRACKED EXCAVATORS 205 NXT

FIND OUT MORE



www.jcb.com

